

Quilt Heritage MUSEUM

A MESSAGE FROM THE PRESIDENT ...

Something About Spring...

There's just something about spring that's renewing and refreshing. It's as if we have a whole new slate. A chance to grow flowers again. Maybe it's the prospect another gardening season ahead that seems to invigorate many of us. No matter how last fall wound up, after a long winter we are ready to be outdoors and get busy.

The QHM Steering Committee and Board Members have been busy too. The Home For Quilts building campaign is moving forward. We have received some great contributions and matching campaign pledges recently. See the campaign progress on **Page ?**. We are looking for

people to fill spots on the Acquisitions Committee, the Campaign Building Fund Committee and more. Are you or someone you know willing to help us grow? Your background, your quilting knowledge or whether you are a quilter or not is not important. Our regionally-based Museum support will include people from a broad sector of Eastern Idaho and Western Wyoming. The Museum Steering Committee has been meeting virtually for some time now due to the Covid pandemic. Some of the committee positions can be accomplished largely without travel as well (internet connection is important though), which makes meeting pretty simple.

Help us grow—call a QHM member today and volunteer! Thank you!



Joyce Shoemaker



INDEX ...

1. **President's Message:** *Something About Spring*
2. **Military Medal Ribbon Quilt**
3. **QHM Efforts Featured in Quiltfolk**
4. **Charity Wheels Quilt**
6. **QHM Exhibit at S. Bannock Cty. Museum**

Military Medal Ribbon Quilt



Recently a unique quilt crossed our path. It is the Military Medal Ribbon Quilt pictured above.

The unique piece is co-owned by McCammon, ID resident Lauren Carpenter and San Antonio, TX resident Greg Hovis. Lauren and her brother Greg inherited the quilt from their parents. The quilt was acquired at an antique show in San Mateo, CA by their father, so the maker is unknown. The quilt was featured on the cover of *Journal of the Orders and Medals Society of America (J.O.M.S.A.)* magazine in 2004.

This quilt is thought to have been made around 1940. It is constructed completely with a rainbow of gross grain ribbons—all hand pieced together. The ribbons are pieced primarily in concentric squares, and then more ribbons were added for the outer borders. It measures 96" x 62 1/2". It has machine stitching running lengthwise about 1" apart. Those stitches are thought to have used to stabilize the rows of rib-

bons to a foundation fabric. There is no batting, but the quilt is hand-quilted.

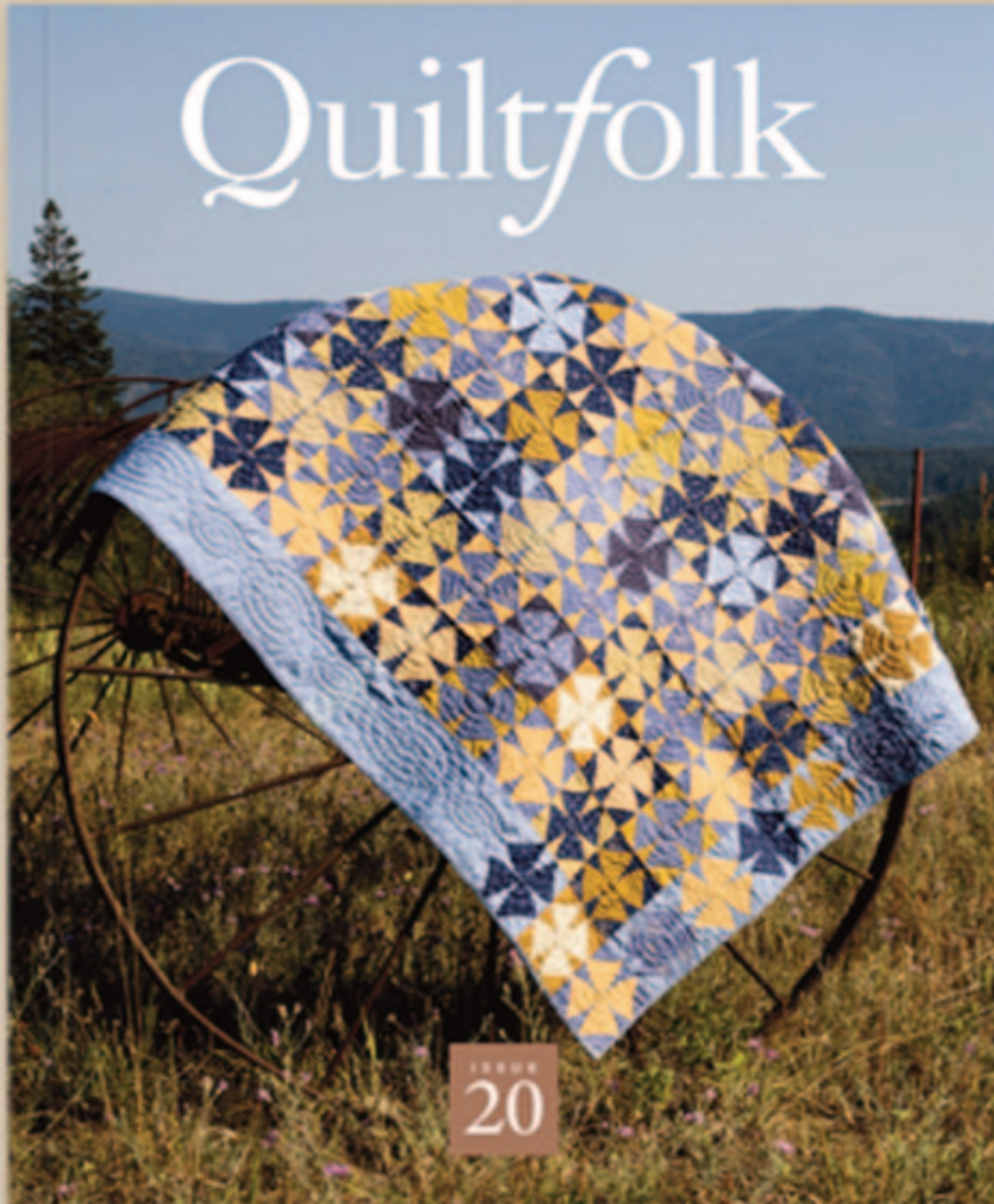


While we cannot be sure, we strongly suspect that the maker had access to a large volume of gross-grain ribbons, the kind military ribbons are made with. Whatever its origin, it is a one-of-a-kind quilt with a vibrant visual impact. Thanks to Lauren and her brother Greg for sharing this with us.

Quilt Heritage Museum Efforts Featured in *Quiltfolk*

Quiltfolk featured Quilt Heritage Museum, Inc. in their Issue 20 published late 2021. Their editors, writer Meg Cox and photographers asked a lot of questions and pulled together an informative article about our

organization. We are grateful for their interest and willingness to promote interest in our non-profit. Given the breadth of articles on Idaho quilters, we think their publication is worth reading.



Cover Photo of *Quiltfolk* Issue 20

Charity Wheels Quilt

One of Quilt Heritage Museum's most recent acquisitions is the Charity Wheels Quilt.

This quilt was one of several donated by Joan Carlson of Foster City, CA. It measures 70" x 76". It features hand-piecing, hand-quilting and was bound by hand as well. It was made circa 1910.



There are a wide variety of fabrics used in the Charity Wheels blocks. The detail photos below show that the maker had no issues with using unmatched fabrics in the points in a single wheel. Each individual wheel block measures approximately 3 1/2" square. Inside each square eight small star-points are spaced around a 2 1/2" circle. The star-points measure approximately 3/4" tall and 5/8" at the

base width. Even the most experienced quilter will tell you that hand-piecing those small pieces accurately is challenging. The wide sashings were common in quilts made from 1890-1925.



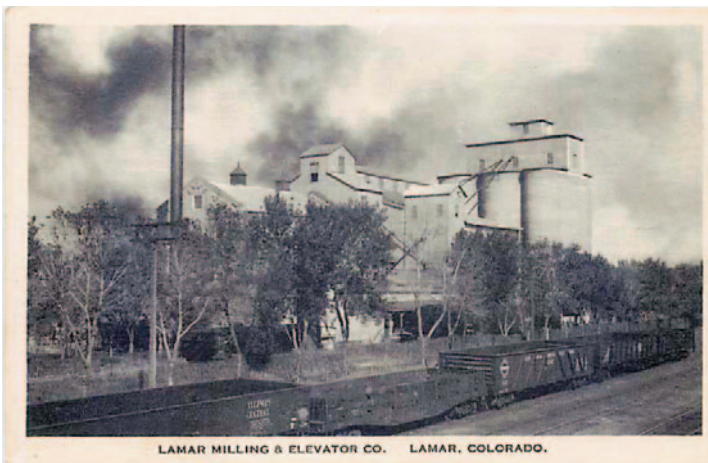
While the quilt is named for the block pattern utilized on the front, this piece has a very interesting backing. Flour sacks have been hand-pieced to make up the quilt backing. The names of some of the flour mills from which the sacks came are visible. In the case of the Valley Milling Co. of Safford, AZ the milling company further identified this specific flour as "Belle". With a bit of on-line checking, it was discovered that the Valley Milling Company was indeed based in Safford, AZ sometime during the 1895-1925 era.

Charity Wheels Quilt



One article discovered stated that the actual Valley Milling Co. flour mill building was moved from Safford to another location and still exists today.

Another portion of this quilt's backing is inked: Patent Flour Lamar Milling & Elevator Company, Chas. Maxwell, Manager, Lamar, CO. Again we turned to the internet for information about Lamar Milling and Elevator Company. A photo of the mill is pictured below. The mill was thought to be the second largest mill in the state of Colorado in 1895. Unfortunately, the mill



PUBLISHER ALBERTYPE CO - COURTESY HIPPOSTCARD.COM

burned down in 1968.

This quilt is hand-quilted in black thread. Historians tell us that quilts



made during the 1880-1900 period were likely quilted in black thread, and quilts from 1915-1935 were more likely quilted in white thread. Since the quilting thread knots appear on the surface of the backing, it could be a clue that the maker intended the quilt to be utilitarian in nature.



The use of flour sacks as a quilt backing is a hallmark of thrift. It would be nice to know who the quiltmaker was and to learn more about their life. We encourage all quiltmakers out there today to label your quilts. It's a simple step in documenting your quilt journey and may help future generations learn about their origin.

Museum Quilts on Exhibit at South Bannock County Museum



From June through mid-July 2022, several Quilt Heritage Museum's collection quilts will be on exhibit at the South Bannock County Historical Center and Museum in Lava Hot Springs, ID. The Historical Center and Museum's address is 110 Main Street in Lava Hot Springs. For visitor hours, call (208) 776-5254.



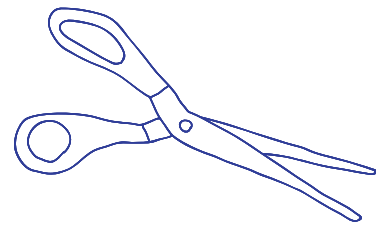
Notable Improvements



1100 First thimbles



1200 Buttons



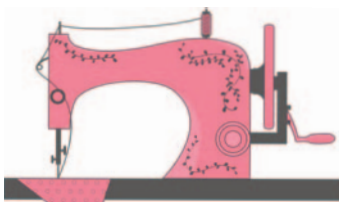
1300 Scissors



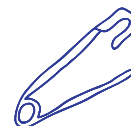
1806 Cotton thread



1812 Tape measure



1849 Safety pin



1853 Singer sewing machine